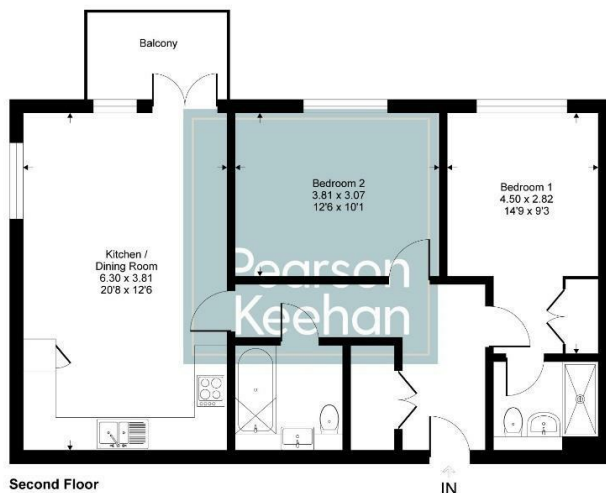




2 Goldstone Lane, Hove, BN3 7RJ
£1,700 Per month -

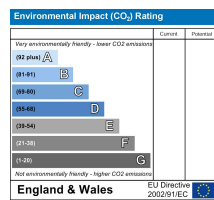
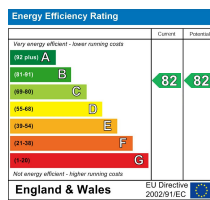
The Chromeworks, BN3
Approximate Gross Internal Area = 67.7 sq m / 729 sq ft



This floor plan is for representation purposes only as defined by the RICS code of Measuring Practice (and IPMS where applicable) and should be used as such by any prospective purchaser. Whilst every attempt has been made to ensure the accuracy contained here, the measurement of doors, windows and rooms is approximate and no responsibility is taken for any error, omission or mis-statement. Specifically no guarantee is given on the total area of the property. If quoted on the plan. Any figure provided is for guidance only and should not be used for valuation purposes.
Copyright Casaphoto Ltd. 2024 - Produced for Pearson Keehan

Council Tax: C

These property details are set out as a general outline only and do not constitute any part of an Offer or Contract. Any services, equipment, fittings or central heating systems have not been tested and no warranty is given or implied that these are in working order. Buyers are advised to obtain verification from their solicitor or surveyor. Fixtures, fittings and other items are not included unless specially described. All measurements, distances and areas are approximate and for guidance only. Room measurements are taken to be the nearest 10 cm and prospective buyers are advised to check these for any particular purpose, e.g. Fitted carpets and furniture. This material is protected by the laws of copyright. The owner of the copyright is Mishon Mackay Estate Agents. This property sheet forms part of our database rights and copyright laws. No unauthorised copying or distribution without permission.



Situated on the second floor of the highly regarded Chrome Works development, this beautifully presented two-bedroom apartment offers stylish contemporary living in the heart of the vibrant Hove Station Quarter.

Ideal for professionals, couples, or a small family, the property combines modern design with comfort and convenience.

At its centre is a bright and spacious open-plan kitchen and living area, flooded with natural light. The contemporary kitchen is fitted with integrated appliances and ample storage, while the generous living space opens onto a private balcony, providing an excellent spot to relax or entertain.

The principal bedroom benefits from an en-suite shower room, while a second double bedroom and a modern family bathroom offer flexible accommodation for guests, family members, or those working from home.

Residents benefit from a range of high-quality features, including a passenger lift serving all floors and underfloor heating throughout, ensuring comfort all year round.

Located within the thriving Hove Station Quarter, the development is surrounded by an exciting mix of independent shops, cafés, and local amenities. Hove Station is just a short walk away, providing excellent transport links to Brighton, London, and beyond. On-street parking permits are available subject to application.

This is an excellent opportunity to rent a contemporary apartment in one of Hove's most dynamic and well-connected locations.

The property is available for occupancy from end of June.

The principal bedroom features a private en-suite bathroom, providing a serene and convenient space to unwind. There is a further double bedroom and a family bathroom.

The Chrome Works is thoughtfully designed featuring a passenger lift for convenient access to all floors and underfloor heating throughout. Every detail has been crafted with a modern finish, ensuring a luxurious and refined living experience.

Located in a thriving area of Hove, this property offers more than just a beautiful home. The neighbourhood is blossoming with new shops, cafes, and amenities, creating a vibrant community atmosphere. With excellent transport links, including a short walk to Hove station, residents enjoy easy access to the city and beyond. On-street parking permits are available upon application, adding to the convenience.

As a landmark in the regeneration of the Hove Station Quarter, The Chrome Works set the tone for the area's transformation. This pioneering development seamlessly blends modern architecture with the rich character of the community.

Pearson Keehan

95 Portland Road, Hove, East Sussex, BN3 5DP

Tel: 01273 206999 Email: hove@pearsonkeehan.com

pearsonkeehan.com